

ELKRIDGE CORNERS

7280 Montgomery Road, Elkridge, MD 21075
Howard County



JOIN:  

- Fully leased
- Elkridge Corners Shopping Center is located in Howard County, MD. Strategically located at the corner of Route 1 and Montgomery Road, Elkridge Corners is convenient to both Baltimore and Washington, DC via Interstates 95 and 895, as well as the Baltimore-Washington Parkway/Route 295.
- Parking: 395 free Surface Spaces are available; Ratio 5.37/1,000 SF
- Anchored by a full service neighborhood supermarket, Green Valley Marketplace
- Surrounded by established and growing community with minimal competition
- Premier shopping center in the immediate area

Matt Copeland
mcopeland@klnb.com
443-632-2051

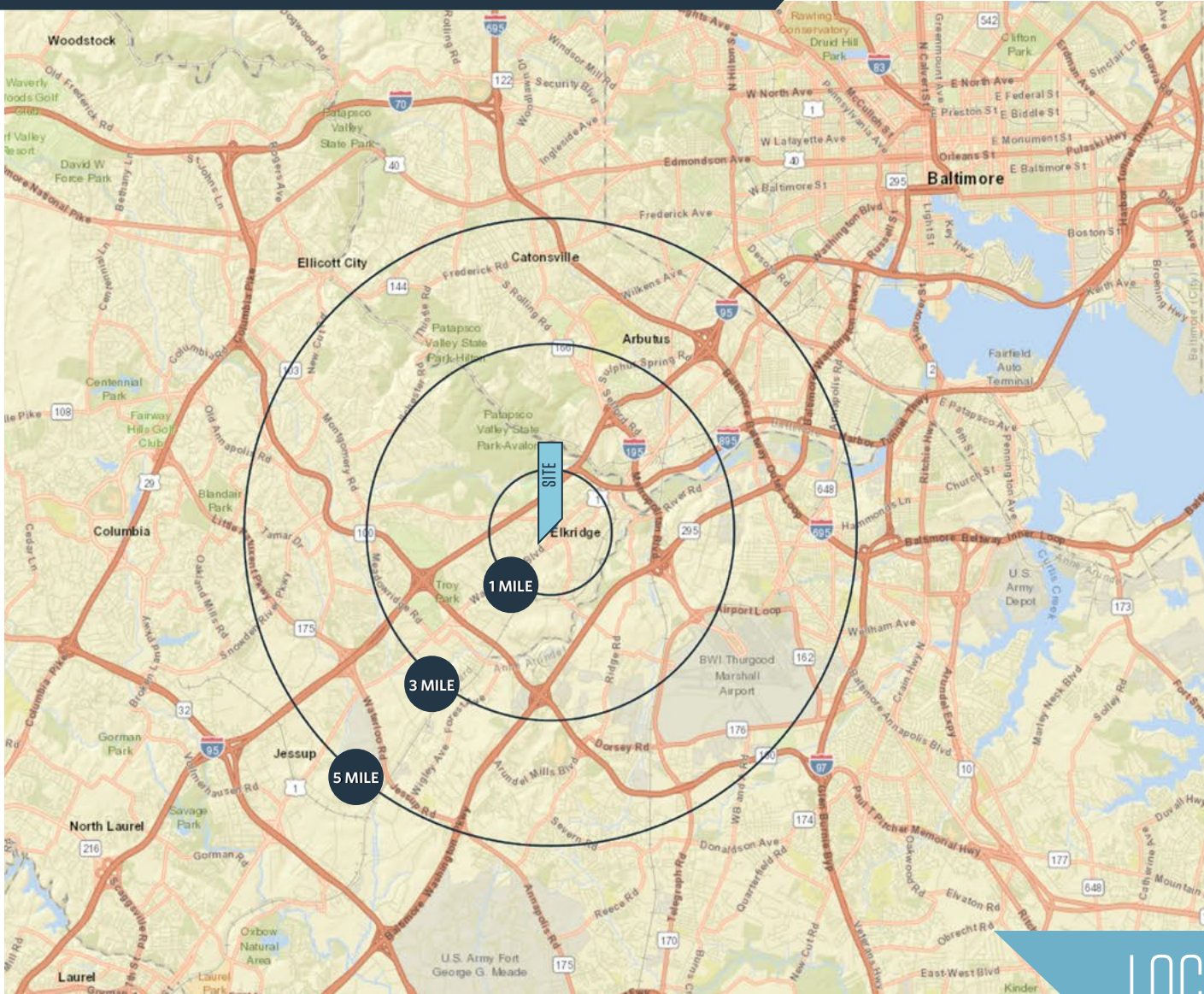
Michael Ginsburg
mginsburg@klnb.com
443-632-2041

100 West Road, Suite 505
Towson, MD 21204
klnb.com

klnb

ELKRIDGE CORNERS

7280 Montgomery Road, Elkridge, MD 21075
Howard County



AVAILABLE SPACE

Fully leased

DEMOGRAPHICS | 2021:

	1-MILE	3-MILE	5-MILE
Population	10,268	38,731	179,267
Daytime Population	2,949	37,065	145,612
Households	3,766	14,138	65,016
Average HH Income	\$123,582	\$141,409	\$125,756

[CLICK TO DOWNLOAD DEMOGRAPHIC REPORT](#)

TRAFFIC COUNTS | 2019:

Route 1	23,940 ADT
Montgomery Rd	9,762 ADT

LOCATION & DEMOGRAPHICS

Matt Copeland
mcopeland@klnb.com
443-632-2051

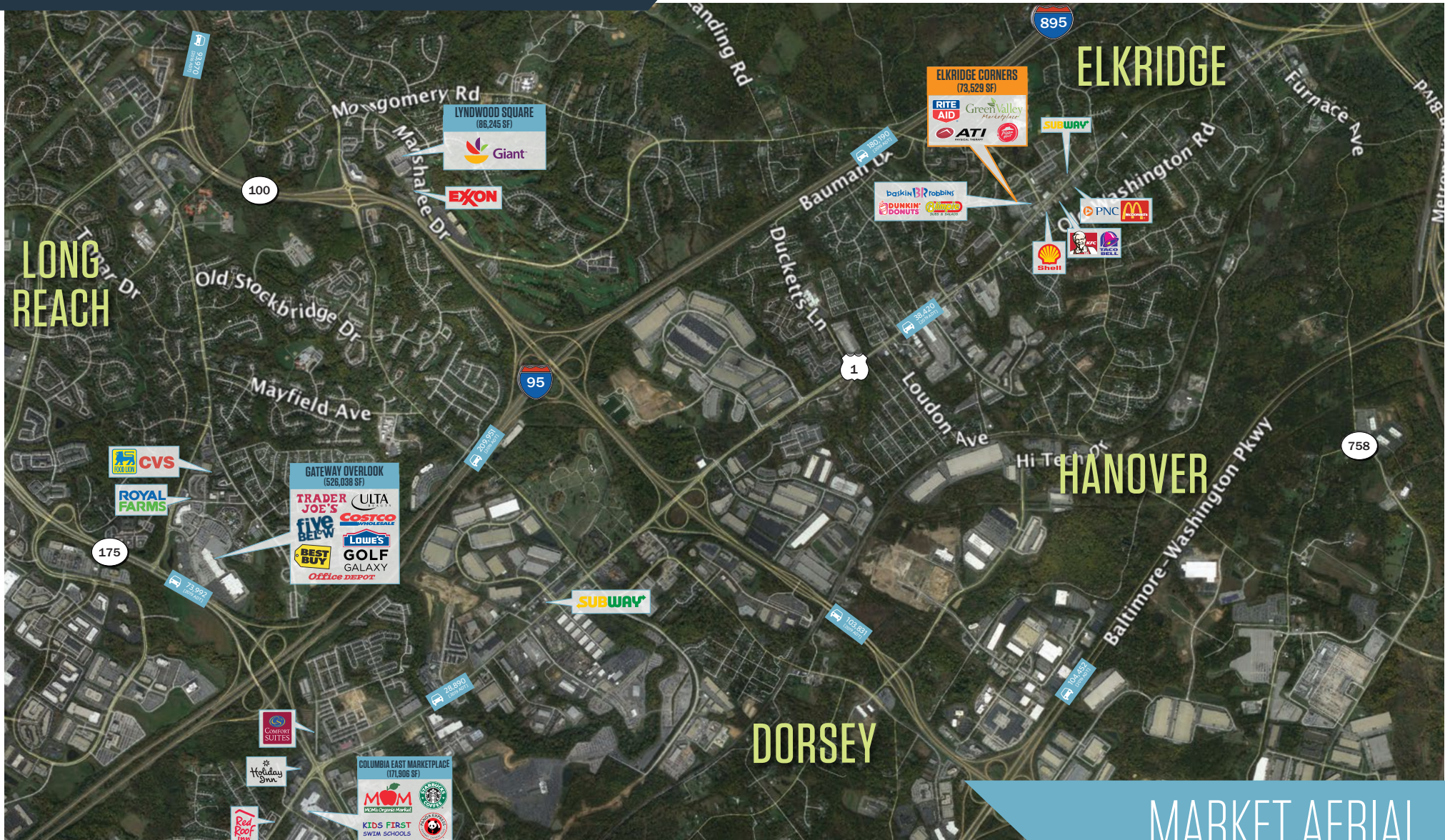
Michael Ginsburg
mginsburg@klnb.com
443-632-2041

100 West Road, Suite 505
Towson, MD 21204
klnb.com

klnb

ELKRIDGE CORNERS

7280 Montgomery Road, Elkridge, MD 21075
Howard County



MARKET AERIAL

Matt Copeland
mcopeland@klnb.com
443-632-2051

Michael Ginsburg
mginsburg@klnb.com
443-632-2041

100 West Road, Suite 505
Towson, MD 21204
klnb.com



ELKRIDGE CORNERS

7280 Montgomery Road, Elkridge, MD 21075
Howard County



SITE PLAN

Matt Copeland
mcopeland@klnb.com
443-632-2051

Michael Ginsburg
mginsburg@klnb.com
443-632-2041

100 West Road, Suite 505
Towson, MD 21204
klnb.com

klnb

ELKRIDGE CORNERS

7280 Montgomery Road, Elkridge, MD 21075
Howard County

CLICK TO VIEW PROPERTY WEBSITE

For More Information, Please Contact:

Matt Copeland

mcopeland@klnb.com
443-632-2051

Michael Ginsburg

mginsburg@klnb.com
443-632-2041

100 West Road, Suite 505
Towson, MD 21204

klnb.com

 facebook.com/KLNB

 [@KLNBLLC](https://twitter.com/KLNBLLC)

 linkedin.com/company/klnb

 instagram.com/klnbllc

While we have no reason to doubt the accuracy of any of the information supplied, we cannot, and do not, guarantee its accuracy. All information should be independently verified prior to a purchase or lease of the property. We are not responsible for errors, omissions, misuse, or misinterpretation of information contained herein and make no warranty of any kind, express or implied, with respect to the property or any other matters.

klnb